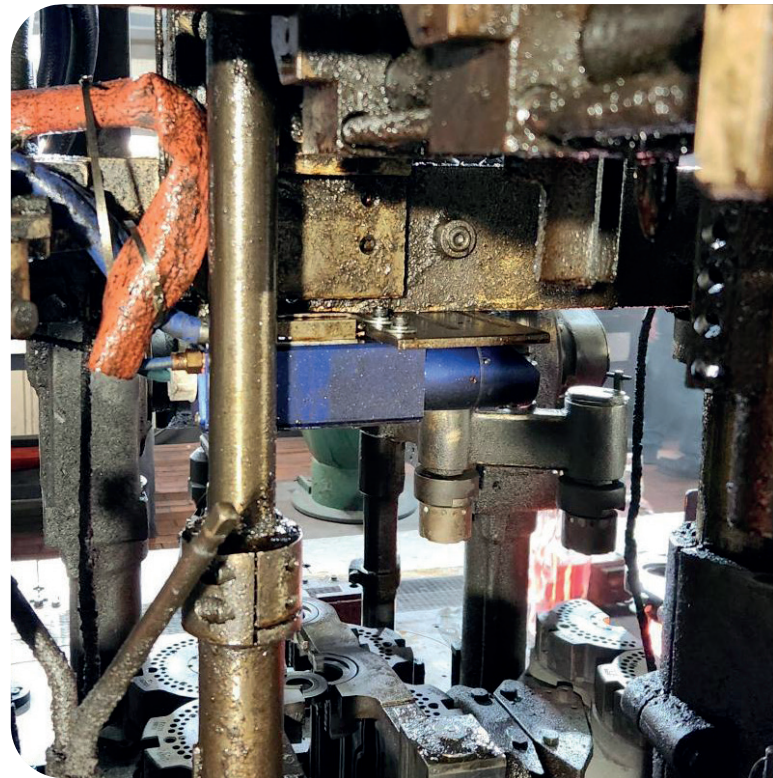


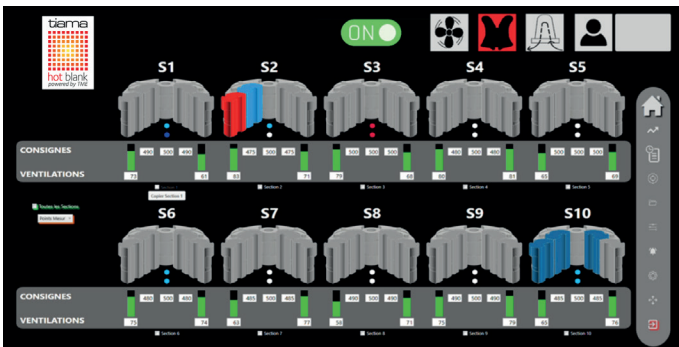
Features

- Accurate and repeatable temperature measurements of the blank molds and plungers
- Automatic regulation of the temperature
- Temperature data over time

Employing a camera per section, the Tiamo HOT blank measures and automatically regulates the temperature of the blank molds.



User interface



Customers benefits

- **Temperature stability** day/night, winter/summer
- **Quick detection** of cooling air issues
- **Reliable temperature measurements of all the sections** at each cycle
- **Reduction** of thermal defects
- **Reduced section start-up** time
- **Tiamo service:** benefit from our worldwide presence and our whole range of services

Operating principle

The Tiama HOT blank is made of one camera per section placed in the center of the IS machine between the blank side and the blow side. An adjustable support attaches to the main beam without any mechanical modifications.

The Tiama HOT blank is connected to the IS machine and works with closed loops to automatically adjust the temperature of the blank molds. The system is universal and can be connected to all IS machine brands.

The cameras have been designed to resist to the harsh environment and require only little maintenance.

Installation requirements

Electrical cabinet dimensions:

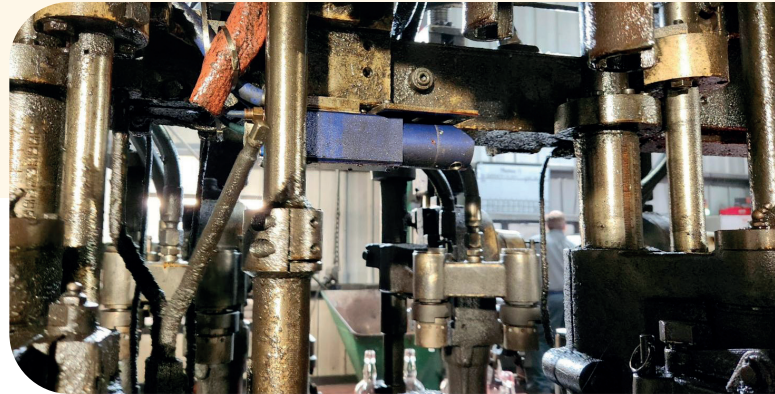
Width 800mm
 Depth 500mm
 Height 1 600mm + 200mm base

Cameras requirements:

Air pressure 7 bars
factory air supply reduced to 0.7 bars / de-oiled

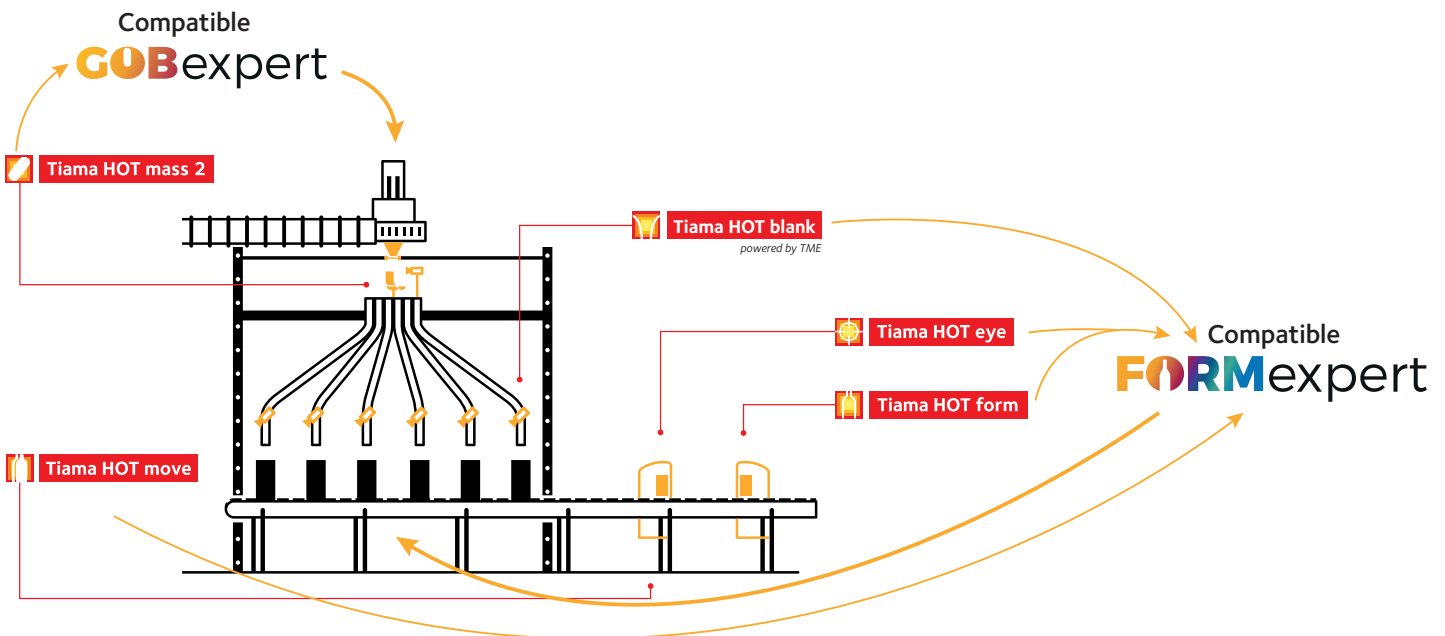
Water requirements:

Water flow 3l/min
 "Clean" factory water



the Smart Factory concept

The Tiama HOT blank is a monitoring solution to help customers to improve the management of their process and to reach their quality level. The Tiama HOT blank belongs to the Tiama HOT systems range, a complete set of modules which gives key information on the process from the gob to the formed articles. The Tiama HOT blank is also part of the smart factory concept developed by Tiama, the system provides a full range of data which can be used in order to have a global overview of the plant, from the Hot End to the Cold End.



Contact us

Headquarters: TIAMA
 215 Chemin du Grand Revoyet
 69230 Saint-Genis-Laval
 France

www.tiama.com
 marketing@tiama.com
 +33 4 37 20 15 65

